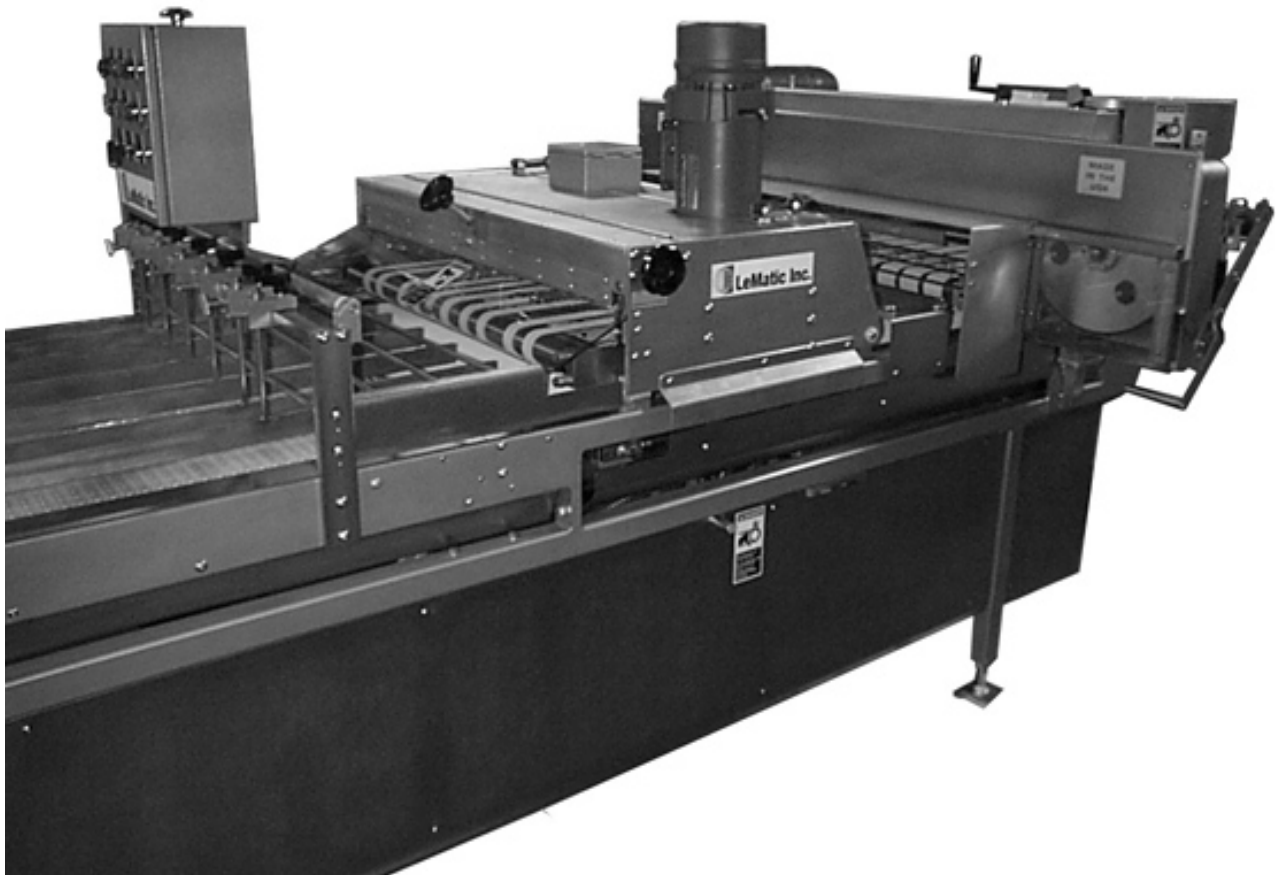


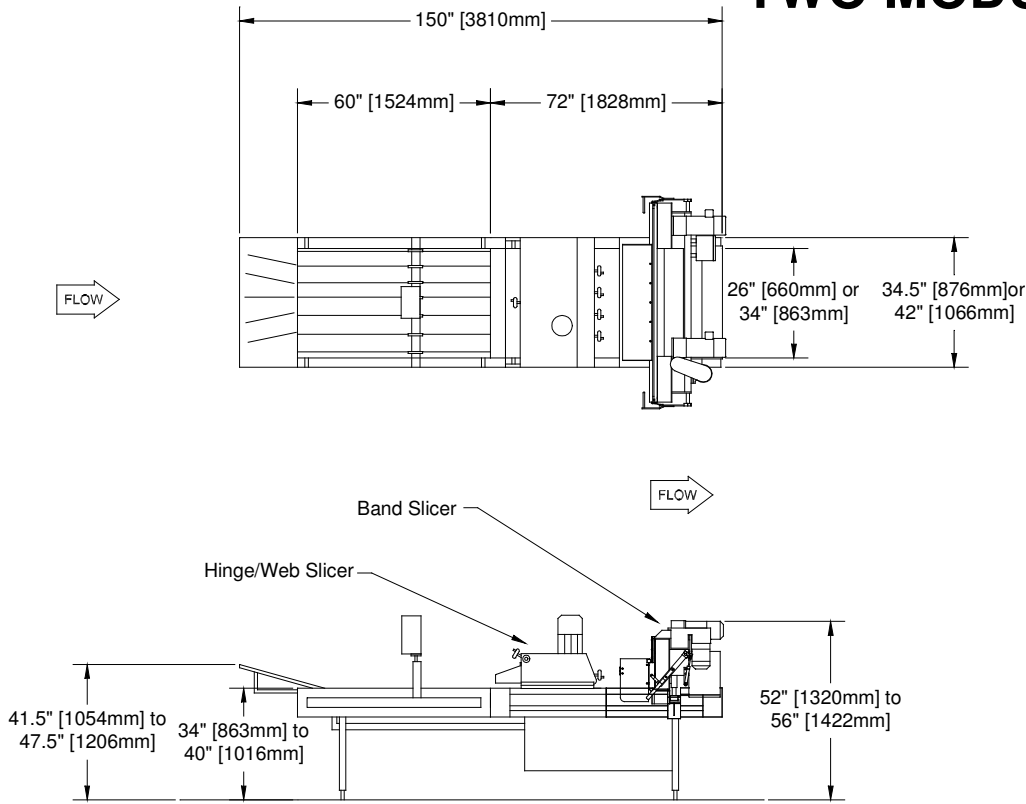
TWO MODULE (MODEL 3694)



Features

- Adjustable guides for six lanes of product
- Supports both Hand Feed and ConveyORIZED Feed applications
- Modular Design allows bakery to start with one type of slicing head and add another in the future
- Durable construction and Safety Conscious design

TWO MODULE



Typical Two Module System with a Hinge Slicer and a Band Slicer shown.
 Note: Add 30" [762mm] to Overall Length for each additional module after two.

General Specifications

- Speed: 30 to 110+ F.P.M.
- Electrical Controls: 208-230-460 Volt 60 Hz 3 Ph (Other Voltages Available)
- Control Voltage: 24VDC
- Air Requirements: None
- Drive: One 3/4 HP Conveyor plus Slicer drives

Options

- Variable Speed Drive
- Power Head Lift
- 26" or 34" belt width conveyors
- Casters and Floor Brakes
- Multiple Heads for custom applications
- Washdown Construction

Slicer Heads Available

- Band Slicing Head, Single or Double Through Slice (BF-15, BF-15W, BF-25, or BF-25W)
- Hinge or Web Slicing Head (GU10, GU10W, GU25, or GU25W)
- Hard Roll Slicing Head (GU9)
- Top Slicer Head (TS)



LeMatic Inc.

*Performance you can depend on...
 Quality you can believe in.*

2410 W. Main Street
 Jackson MI 49203 USA
 Phone (517) 787-3301
 Fax (517) 782-1033
 www.lematic.com